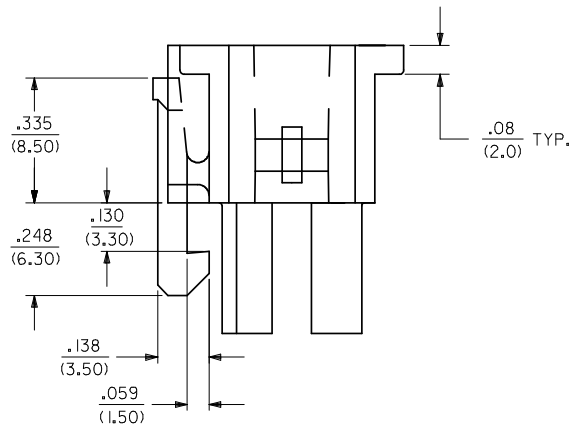
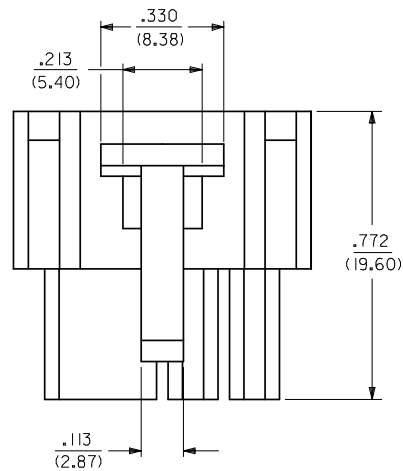
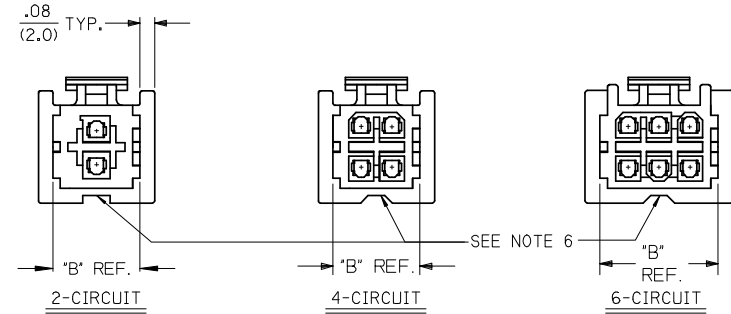


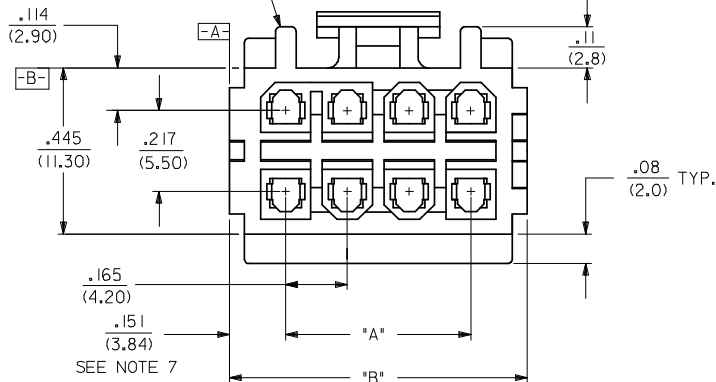
PROTECTIVE SIDES AVAILABLE ON ALL CIRCUITS EXCEPT TWO AND FOUR CIRCUITS.



NOTES:

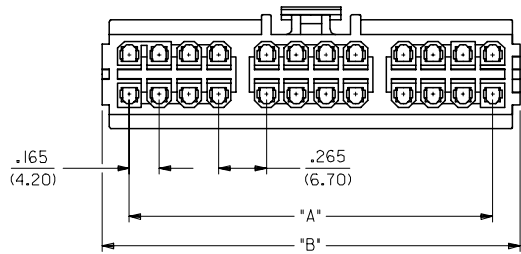
1. MATERIAL: UNFILLED POLYESTER, U.L. 94V-0. HOUSING COLOR: MOLDED BLACK
2. FINISH: N/A
3. PRODUCT SPECIFICATION: PS-5556-003
4. PACKAGING SPECIFICATION: BULK
5. HOUSING TO BE USED WITH TERMINAL #5556, AND T.P.A. LOCK #30072-\*. RECEPTACLE HOUSING TO MATE WITH PLUG HOUSING #30068, ST. HEADER #30069, AND RT. ANGLE HEADERS #30070 & #44483. HOUSING ACCEPTS CONNECTOR POSITIONING ASSURANCE (C.P.A.) LOCK #30071.
6. RELIEF NOTCH IS OPTIONAL AND MAY OR MAY NOT APPEAR ON 2, 4, 6, 10 & 12 CIRCUIT HOUSINGS ONLY.
7. FOR 2 CKT HOUSING, DIMENSION IS .231/5.88
8. FOR 2 & 4 CKT HOUSINGS, DIMENSION IS .070/1.78
9. THIS PART CONFORMS TO CLASS B REQUIREMENTS OF COSMETIC SPEC PS-45499-002.

PROTECTIVE SIDES AVAILABLE ON ALL CIRCUITS EXCEPT TWO AND FOUR CIRCUITS.

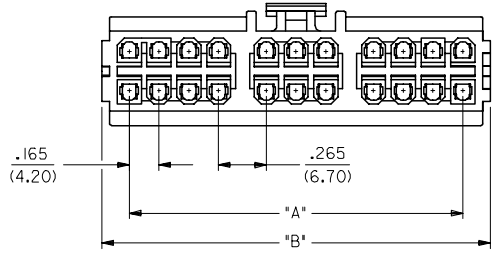


<b>REVISED NOTES</b> EC NO: UCP2009-0052 DRWN: JKLOSTERM 2008/07/10 CHKD: JBELL 2008/07/21 APPR: FSM/TH	QUALITY SYMBOLS ▽=0 ▽=0	GENERAL TOLERANCES (UNLESS SPECIFIED) <table border="1"> <tr> <th></th> <th>mm</th> <th>INCH</th> </tr> <tr> <td>4 PLACES</td> <td>±---</td> <td>±---</td> </tr> <tr> <td>3 PLACES</td> <td>±---</td> <td>±.010</td> </tr> <tr> <td>2 PLACES</td> <td>±0.25</td> <td>±.014</td> </tr> <tr> <td>1 PLACE</td> <td>±0.36</td> <td>±---</td> </tr> </table>		mm	INCH	4 PLACES	±---	±---	3 PLACES	±---	±.010	2 PLACES	±0.25	±.014	1 PLACE	±0.36	±---	DIMENSION STYLE <b>IN/MM</b>	SCALE <b>4:1</b>	DESIGN UNITS <b>INCH</b>	THIRD ANGLE PROJECTION
		mm	INCH																		
	4 PLACES	±---	±---																		
	3 PLACES	±---	±.010																		
2 PLACES	±0.25	±.014																			
1 PLACE	±0.36	±---																			
DRAFT WHERE APPLICABLE MUST REMAIN WITHIN DIMENSIONS	MATERIAL NO. <b>SEE CHART</b>	DRAWN BY R/JF	DATE 09/23/91	TITLE <b>2-24 CKT. RECPT. HSG. MINI-FIT T.P.A. SERIES</b>	MOLEX INCORPORATED	SHEET NO. <b>1 OF 2</b>															
SIZE <b>C</b>	THIS DRAWING CONTAINS INFORMATION THAT IS PROPRIETARY TO MOLEX INCORPORATED AND SHOULD NOT BE USED WITHOUT WRITTEN PERMISSION	APPROVED BY RAS	DATE 09/23/91	DOCUMENT NO. <b>SD-30067-*</b>																	
<b>G1</b>	<b>REV</b>																				

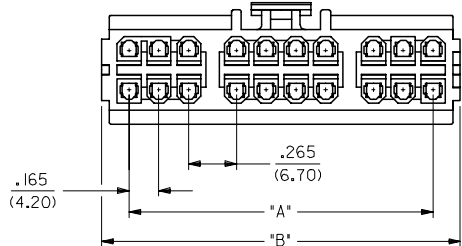
CKT. SIZE	ENG. NO.	EDP. NO.	DIM. "A"	DIM. "B"
02	30067-02A2	15-97-5021	—	.467 (11.86)
04	30067-04A2	15-97-5041	.165 (4.20)	.467 (11.86)
06	30067-06A2	15-97-5061	.331 (8.40)	.633 (16.08)
08	30067-08A2	15-97-5081	.496 (12.60)	.798 (20.27)
10	30067-10A2	15-97-5101	.661 (16.80)	.963 (24.46)
12	30067-12A2	15-97-5121	.827 (21.00)	1.129 (28.68)
14	30067-14A2	NOT TOOLED	.992 (25.20)	1.294 (32.87)
16	30067-16A2	15-97-5161	1.157 (29.40)	1.459 (37.06)
18	30067-18A2	NOT TOOLED	1.520 (38.60)	1.822 (46.28)
20	30067-20A2	NOT TOOLED	1.685 (42.80)	1.987 (50.46)
22	30067-22A2	NOT TOOLED	1.850 (47.00)	2.152 (54.66)
24	30067-24A2	NOT TOOLED	2.016 (51.20)	2.318 (58.88)



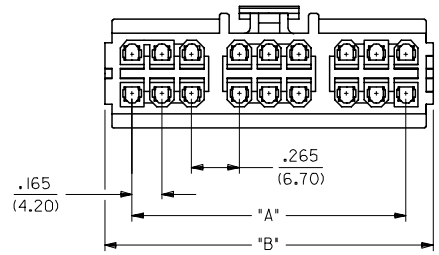
24 CIRCUIT



22 CIRCUIT



20 CIRCUIT



18 CIRCUIT

LEGEND:

30067 - \*\* \* 2  
 CIRCUIT SIZE (02-24)  
 HOUSING COLOR  
 A = MOLDED BLACK

SEE SHEET ONE EC NO: UCP2005-1142 G DRWALS:EMWART 2004/12/16 CHKD:GPOLGAR 2004/12/16 APPR:YMARGULLI 2004/12/20 REV DESCRIPTION	QUALITY SYMBOLS	GENERAL TOLERANCES (UNLESS SPECIFIED)	DIMENSION STYLE IN/MM	SCALE 2:1	DESIGN UNITS INCH	THIRD ANGLE PROJECTION	
	 	4 PLACES ± .005 ± .005 3 PLACES ± .005 ± .010 2 PLACES ± 0.25 ± .014 1 PLACE ± 0.36 ± .014 ANGULAR ±1/2°	DRAWN BY DATE RJF 09/23/091 CHECKED BY DATE GEP 09/23/91 APPROVED BY DATE RAS 09/23-04	TITLE	MINI-FIT T.P.A. RECEPTACLE HOUSING		
	DRAFT WHERE APPLICABLE MUST REMAIN WITHIN DIMENSIONS		MATERIAL NO.	SEE CHART	DOCUMENT NO.	MOLEX INCORPORATED	
			SIZE C	THIS DRAWING CONTAINS INFORMATION THAT IS PROPRIETARY TO MOLEX INCORPORATED AND SHOULD NOT BE USED WITHOUT WRITTEN PERMISSION		SHEET NO. 2 OF 2	